

Masport Akaroa - Technical Specifications

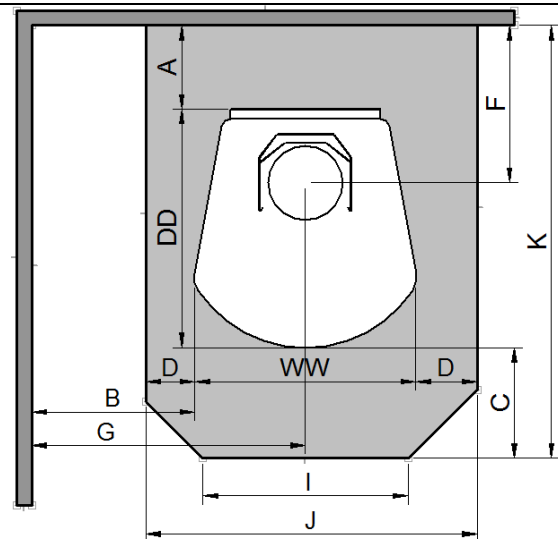
(These instructions must be used in conjunction with the "General Installation Instructions" for Masport Fires)

Akaroa burner has been tested and complies to following standards & tests:
NZ National Environmental Test Standards - AS/NZS 4012:2014 and AS/NZS 4013:2014.
NZ National Environmental Safety Test Standard - AS/NZS 2918:2001

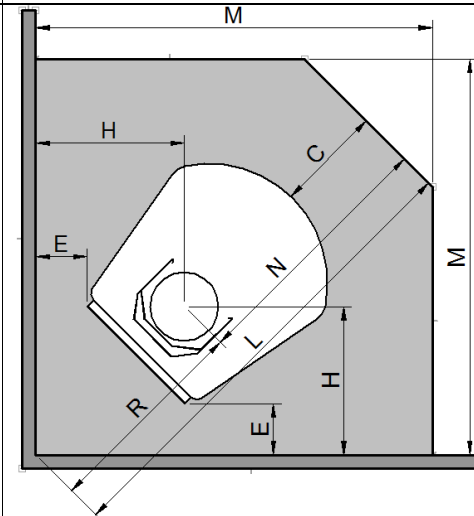
Overall Dimensions	481mm Wide x 536mm Deep x 1025mm High		
Weight	120 kg		
Test Method	Emissions mg/MJ	Emissions g/kg	Efficiency %
National Environment Standard AS/NZS 4012/13:2014	52 mg/MJ	0.69 g/kg	66.8%
Heat Output	Power in kW		
Minimum Average Output	7.3 kW		
Maximum Average Output	9.8 kW		
Peak Observed during Tests	16.2 kW		
Flue Shield	600mm Long SS Masport Double Flue Shield		
Flue System	Std 4.2M Long, 150mm Masport Flue System		
Floor Protector Requirement	Ash Floor Protector		

Clearances to Combustibles

Parallel Installation



Corner Installation



A- Rear Panel to Rear Wall	100 mm	C- Glass to Floor Protector Front	300 mm
B-Cooktop Edge to Side Wall	350 mm	E- Cooktop Corner to Wall	180 mm
C- Glass to Floor Protector Front	300 mm	H- Flue Centre to Wall	400 mm
D- Floor Protector Side	117 mm	L- Floor Protector Diagonal	1236 mm
F- Flue Centre to Rear Wall	261 mm	M- Floor Protector Side	1025 mm
G- Flue Centre to Side Wall	591 mm	N- Flue Centre to Floor Protector Front	670 mm
I- Floor Protector Front Edge	415 mm	R- Flue Centre to Wall Corner	566 mm
J- Floor Protector Width	715 mm	WW- Overall Width of Fire	481 mm
K- Floor Protector Depth	920 mm	DD- Overall Depth of Fire	536 mm
		HH- Overall Height of Fire	1025 mm

Seismic Restrain - In New Zealand, it is required that the wood burner and floor protector are secured to prevent shifting in the event of an earthquake. This is best done by fastening the burner right through the protector to the floor, using two screws not less than 12 gauge or the equivalent size of coach bolts or toggle fasteners. Seismic holes are at the rear of the burner.